

# snap

BARCODE SCANNER  
3100 series



## **SNAP 3100 series Long Range CCD Barcode Scanner**

SNAP 3100 series barcode scanners have an outstanding reading performance and excellent ergonomic design combined with unmatched durability.

SNAP 3100 series barcode scanners is capable of reading high density symbologies (4 mil) and also low density symbologies from as far as 410mm or further.

SNAP's high speed scanning and superior optical resolution are combined together which yields outstanding reading capability and aggressive performance.

SNAP 3100 series scanners are rugged and durable which has no moving parts and yet operates at a speed of 200 scans per second.

The new ergonomic-design allows the user to easily target the desired bar code and complete the data transmission with a simple press of button.

### **SNAP 3100 series scanners support many applications, including:**

- ▶ Office Automation / Document Handling
- ▶ Manufacturing / Warehouse / Logistics
- ▶ Cash and Carry Retail Applications
- ▶ Shipping and Receiving Control
- ▶ Healthcare / Pharmacy



# SPECIFICATIONS

## *snap 3100 scanner*



### 3100i

#### PERFORMANCE

Category	Linear Imager Scanner
Optical sensor	2500 pixels
Light source	Red LED (630 ~ 660nm)
Resolution	4 mil or more
Scan angle	43°
Scan rate	100 ~ 200 scan/sec
PCS value	45% or more
Depth of field	0.5 to 11 cm/ 0.2 to 4.4 in
Barcode Symbolologies	Code 39, Full ASCII Code 39, Code 32, Code 128, Code 93, Code 11, Codabar/NW7, All UPC/EAN/JAN Code (EAN-13, EAN-8, UPC-A, UPC-E, EAN-128), Interleave 2 of 5, STD 2 of 5, Industrial 2 of 5, matrix 2 of 5, Chinese Postage Code, IATA, MSI/PLESSY, Italian Pharmacy Code, Industrial 2 of 5, Telepen
Ambient illumination	10,000 Lux max.

#### PHYSICAL

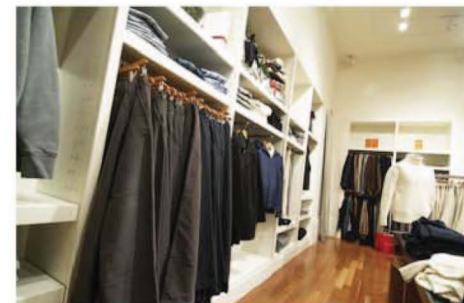
Weight	250g
Color	Leather Black / Gloss White
Dimension	180mm(L) x 57mm(W) x 25mm(H)
Connections	PS2 / USB / RS232

#### ELECTRICAL

Voltage	4.5V ~ 5.25V DC 5%
Operation current	100 ~ 130mA typical
Stand-by current	20 ~ 30mA
Power on	125mA

#### ENVIRONMENT

Operating temperature	0°C to 50°C / 32°F to 105°F
Storage temperature	-26°C to 60°C / -15°F to +140°F
Operating/storage humidity	Non-condensing 10% to 80% / 10% to 90%
Impact Resistance	Approved by 1.2m drop test on concrete
IP rating	IP30
Safety approval	FCC Class-A, CE, U/L, RoHS compliant
Warranty	1 year



All specifications are subject to change without prior notice.



**Computer Peripheral  
and Supplies Ltd.**

244 Soi Pattanakarn 53, Suanluang, Suanluang Bangkok 10250 Thailand

Tel : (66) 0-2322-9535, 0-2722-4040 Fax : (66) 0-2322-7990

[www.cps.co.th](http://www.cps.co.th) • [www.facebook.com/cps.co.th](https://www.facebook.com/cps.co.th)

